

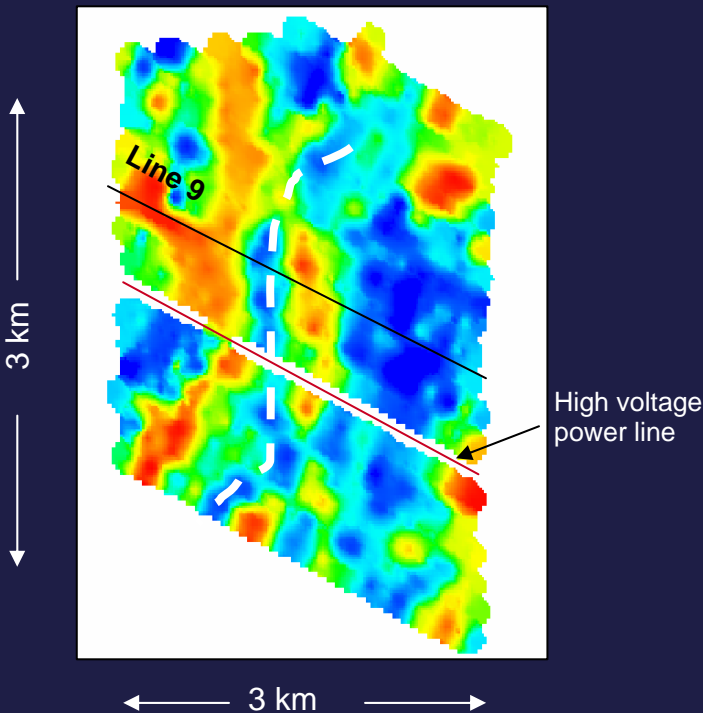


SKYTEM PALEOCHANNEL MAPPING

Beaufort Palaeochannel, Western Australia

An example of palaeochannel detection from a recent SkyTEM survey in Western Australia

Mining, Infrastructure, Environment



A depth slice of resistivity over elevation range 220 - 230 m is shown in the panel at left.

The palaeochannel is revealed as a sinuous high resistivity zone (dashed white line) in the topographic low running NE-SW through the survey area.

In the cross-section view below, the sandy palaeochannel sediments appear as a resistive zone where the channel has been incised into a laterally-extensive low resistivity clay horizon.

Resistivity-depth cross-section – Line 9

